

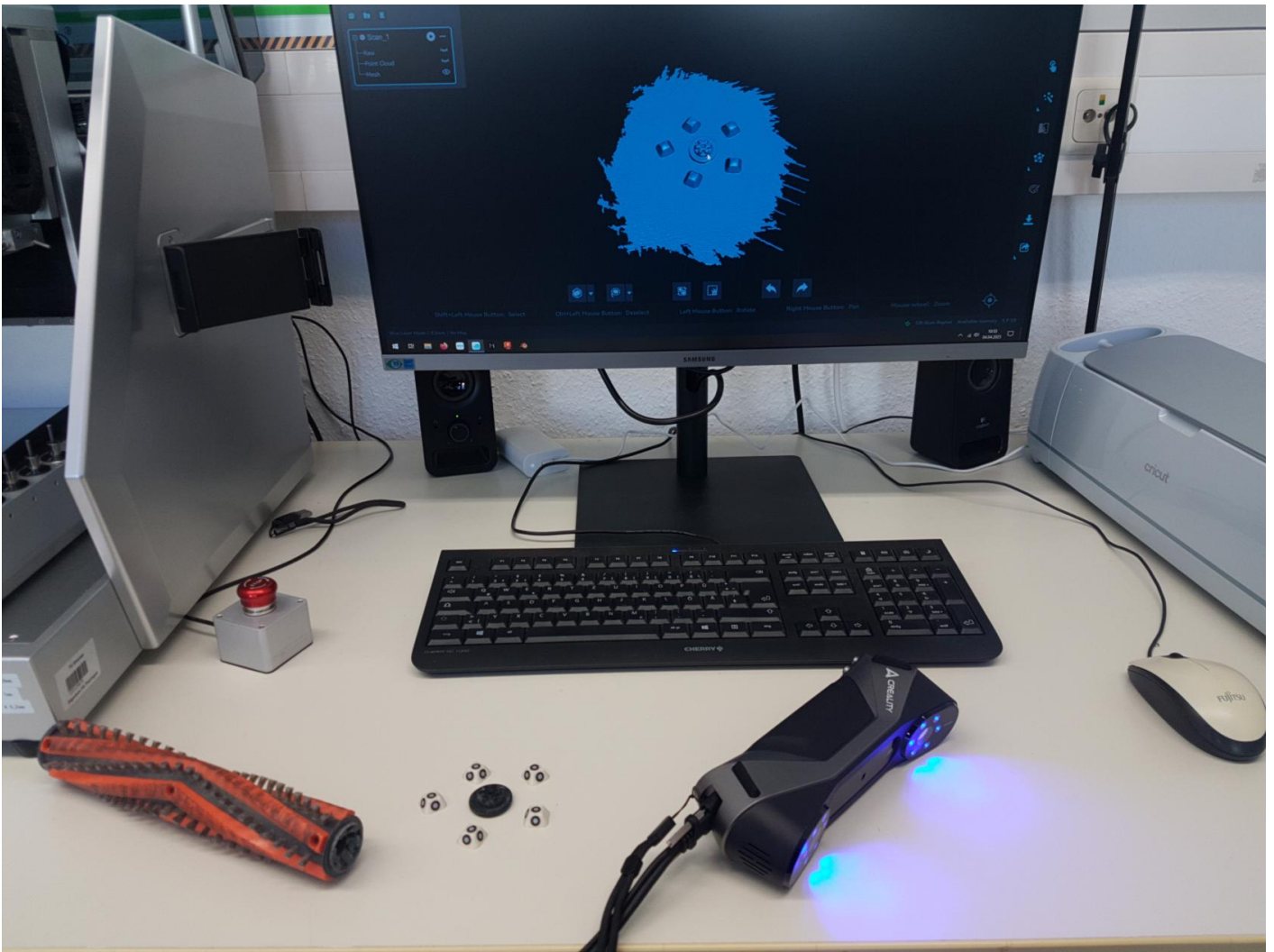
Vacuum cleaner

My neighbours gave me this vacuum-cleaner brush that didn't work anymore because it stopped spinning. The connecting piece was so worn out, that the "clutch" piece would spin freely inside it.



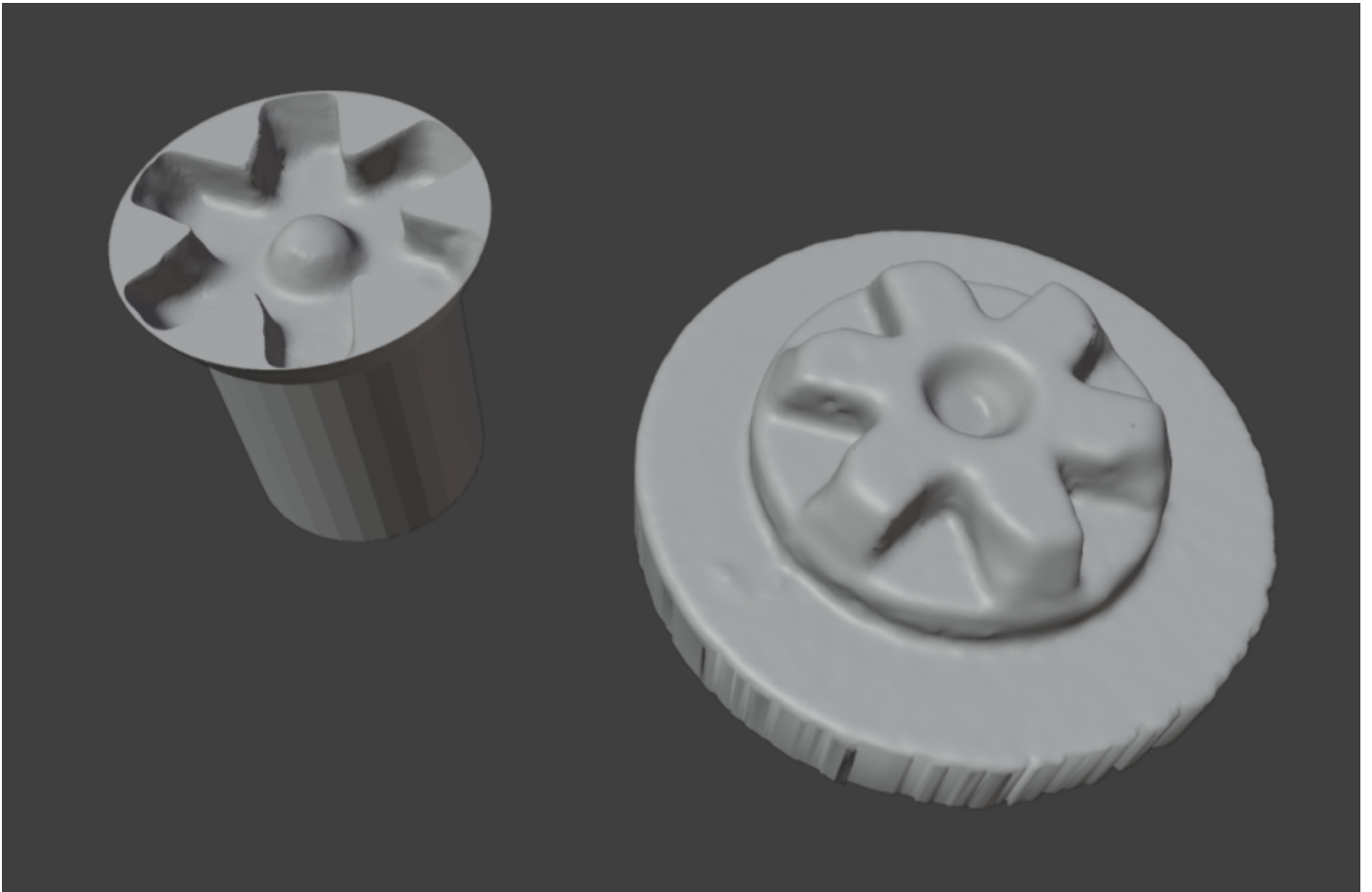
I 3D-scanned the clutch with our CR-Scan Raptor in blue laser mode. For this to work, you need several tracking points around the object.





Here you can see the result of the scan.

I used blender to postprocess the data into a positive part and a negative copy that fits into the center of the brush.



In order to make it removable, I drilled a hole through my printed piece and the brush, in place of one of the screw holes. Now I can securely fix the part in rotation, but still dissassemble and replace it if neccesary.



This is what the finished result looks like:



Revision #6

Created 11 April 2025 12:40:40 by Ferdi

Updated 22 April 2025 13:23:41 by Ferdi