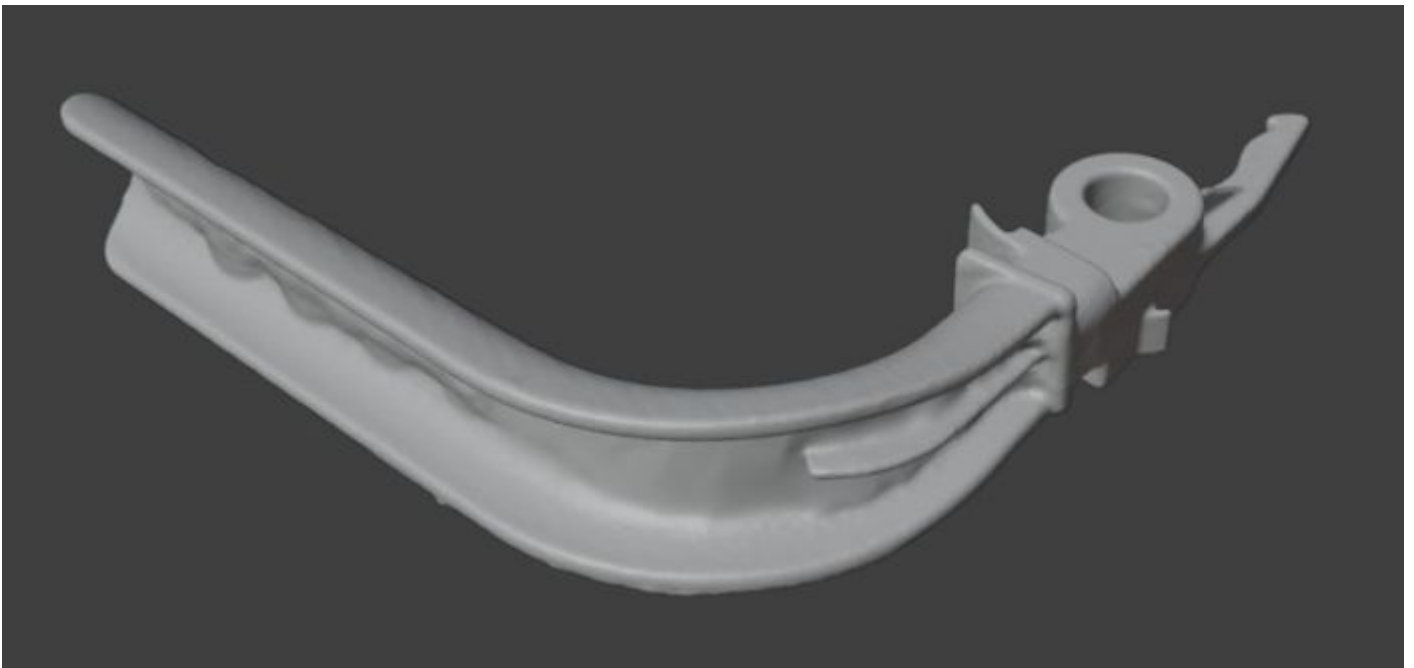


# Handle Lawn Mower

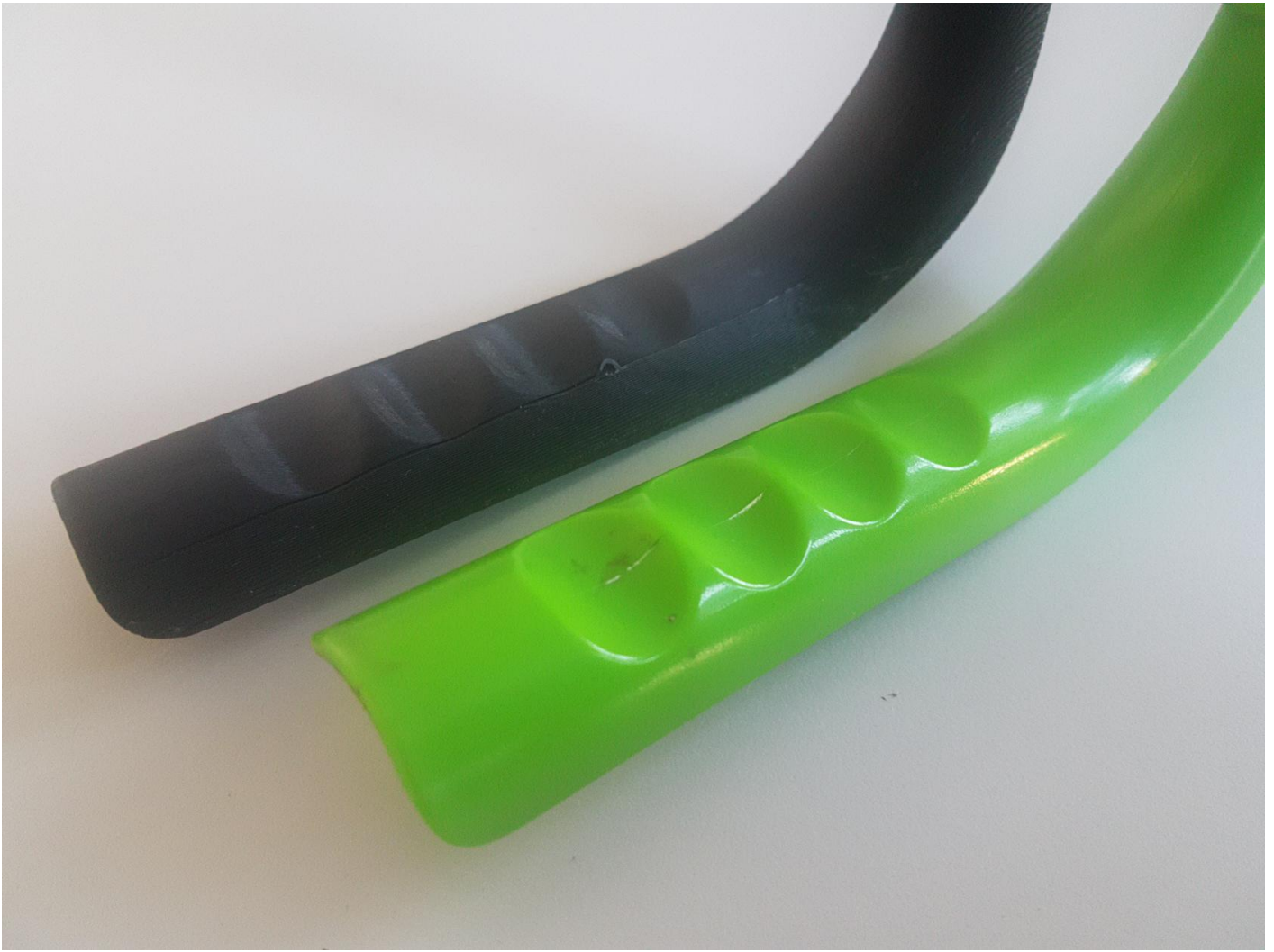
Our neighbour Dr.-Ing. Christoph Baumer gave us a broken handle for lawn mower with the request to fix it. We made a 3D-scan of it and printed a copy:











The first version was lacking the groove in the handle, so we printed a second one in the right color.



This the final working version installed in the lawn mower:



This is the name and brand of the Lawn mower: [LUX 20V Akku-Rasenmäher](#)



---

Revision #5

Created 2025-08-27 11:05:59 UTC by Ferdi

Updated 2025-09-24 12:58:30 UTC by Ferdi